



DairyFeed C

The optimum concentrate feeding system

GEA Milking & Cooling | WestfaliaSurge

engineering for a better world

GEA Farm Technologies



The right amount of feed at just the right time.

The optimal feeding of each individual animal is the prerequisite for the healthy day-to-day life of the herd. DairyPlan C21 and out of parlour feeding stalls are designed to ensure that feed allocation is carried out according to the latest feed rationing techniques. Once the presence of the cow in the feeding stall has been detected by a Responder around the animal's neck or a foot or neck Rescounter, DairyPlan C21 ensures that the animal receives its allotted amount of feed.

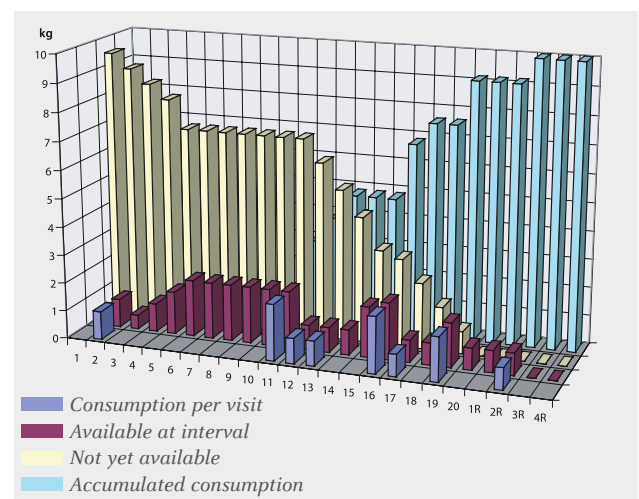
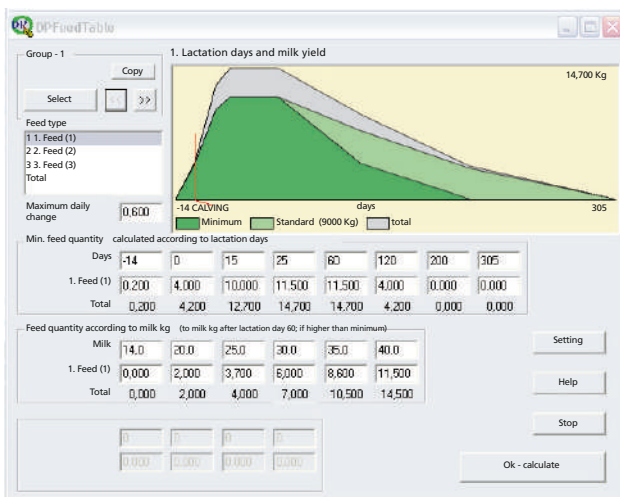
Smooth, trouble-free feeding with DairyFeed C

Precise identification of each cow in the feeding stall is carried out by a Responder around the animal's neck or a foot or neck Rescounter. Rescounters record the

cow's activity level which increases when the animal is on heat. Whether at home or on the road - the data can be retrieved on-site or with your mobile device!



DairyPlan C21 allows you to implement feeding strategies in a competent and efficient way. Daily rations are automatically calculated in relation to milk yield, lactation status and, if available, BCS (BodyConditionScore).



The dynamic timed feed allocation ensures the regular intake of rations throughout the day, even the animal visits the feeding stall at irregular intervals.



Whether single box DairyFeed C-S80, double box DairyFeed C-D80 or wall box DairyFeed D-W80: DairyFeed C is always the right choice when it comes to computer-based distribution of concentrated feed – whichever model you finally decided on.



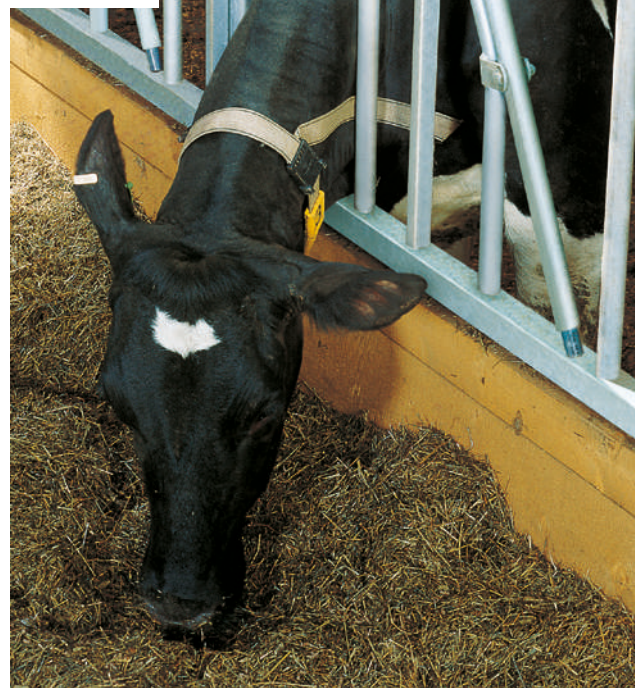
Volume-dosing devices in each feeding stall ensure that the animal receives just the right amount of feed. The system functions regardless of whether it is handling large or small portions, and pellets or meal-based mixtures.

The automated out of parlour feeding system, DairyFeed C, can handle up to four different types of feed. All feeding stalls are equipped with high quality stainless-steel troughs. The transponder identifies the animal via the Responder or Rescouter.



No fighting over food.

The long, enclosed DairyFeed C feeding stalls are designed to prevent animals interfering with one another as they feed, and also to prevent cows on heat from causing accidents. This ensures a stress-free atmosphere and permits a high throughput rate. Optionally available with feeding stall locking gate!



Your advantages at a glance:

- Smooth incorporation of feeding management into a complex DairyManagementSystem
- Dynamic timed feed allocation ensures that each animal receives its allotted daily ration according to sound nutritional principles
- Configuration option for circumstances where irregularly-timed feeding is required
- Easy entry of daily rations
- Automatic calculation of concentrate feed ration with respect to milk yield



We live our values.

Excellence • Passion • Integrity • Responsibility • GEA-versity

GEA Group is a global engineering company with multi-billion euro sales and operations in more than 50 countries. Founded in 1881, the company is one of the largest providers of innovative equipment and process technology. GEA Group is listed in the STOXX® Europe 600 index.

GEA Farm Technologies GmbH

Siemensstraße 25 - 27, D-59199 Bönen
Tel. +49 (0) 23 83 93 7-0, Fax +49 (0) 23 83 93 8-0
www.gea.com | www.gea-farmtechnologies.com